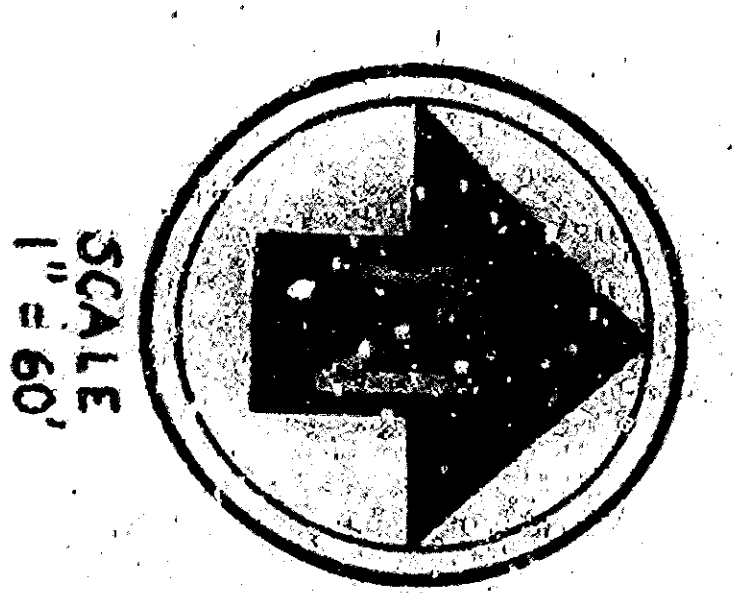
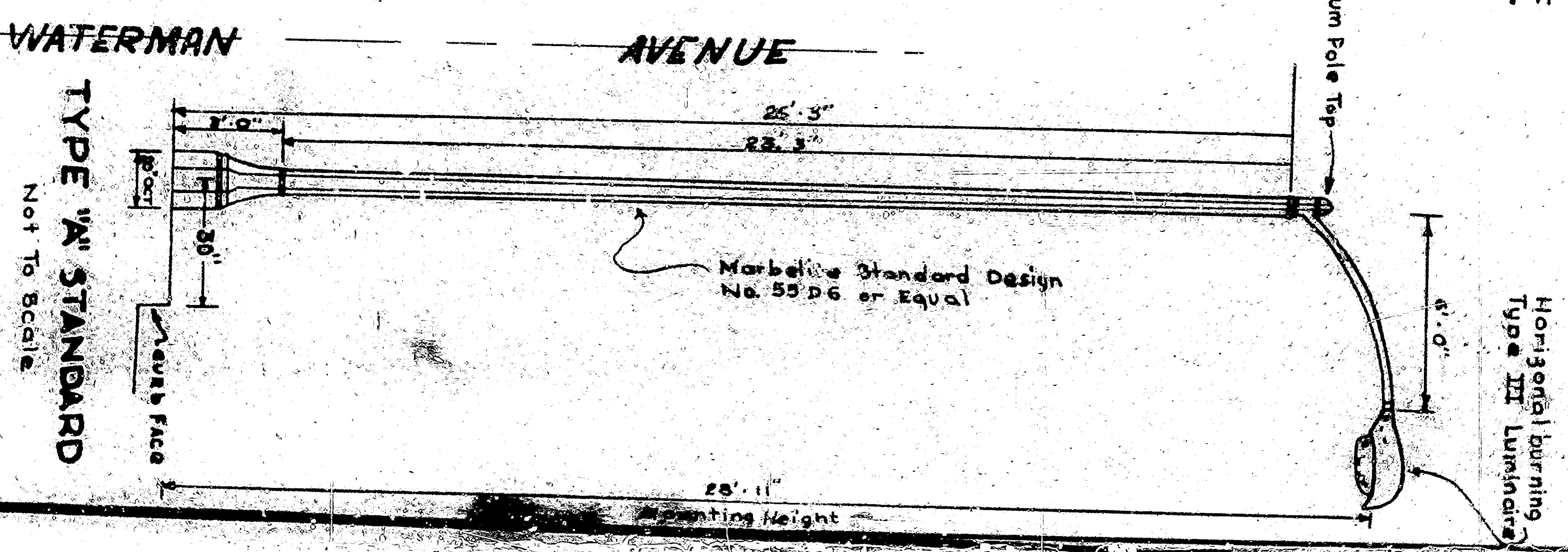


- LEGEND:**
- Existing Steel Light Standard to remain in Present Location.
 - Existing Street Light Standard, Reconnect to new Street Light Cable.
 - Existing Street Light Standard, Reconnect to new Street Light Cable, and Connect to New Standard.
 - Existing Street Light Standard, Reconnect to new Street Light Cable, and Connect to New Standard, and Connect to New Standard.
 - Existing Street Light Standard, Reconnect to new Street Light Cable, and Connect to New Standard, and Connect to New Standard, and Connect to New Standard.
 - Existing Street Light Standard, Reconnect to new Street Light Cable, and Connect to New Standard, and Connect to New Standard, and Connect to New Standard, and Connect to New Standard.

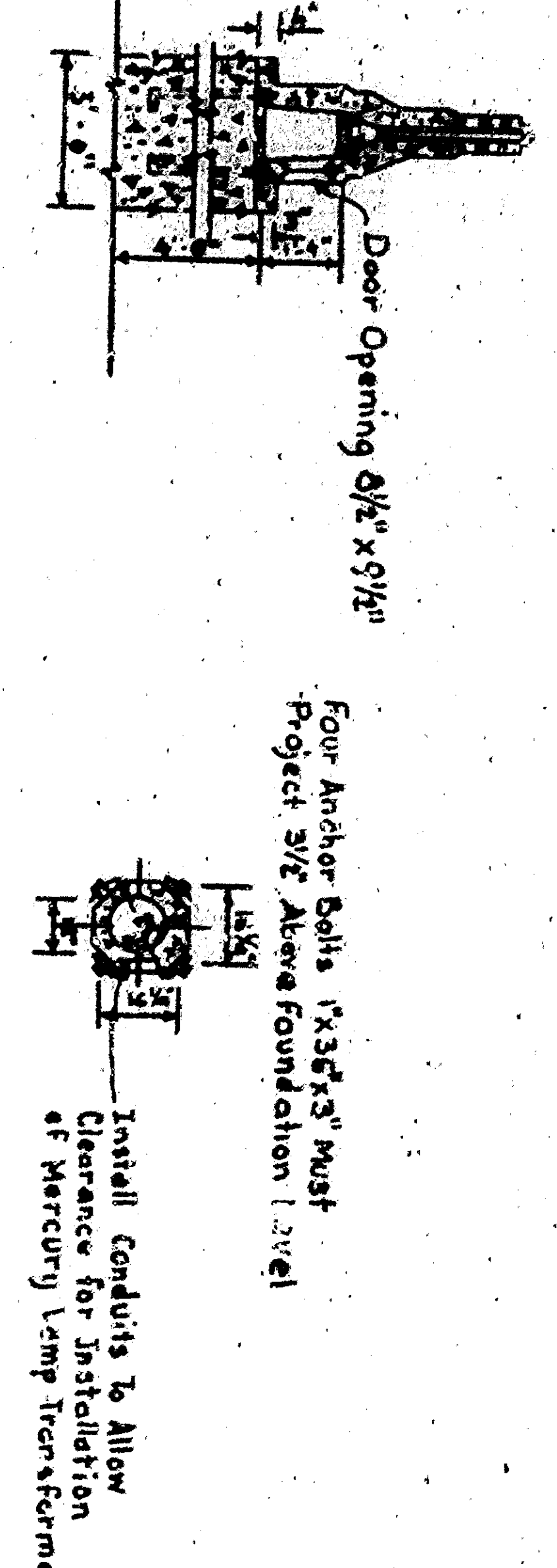
NOTES:

Existing 5/8 copper, 4-wire shielded lighting circuits consist of 1/2 conductor and 270-330 KV cables. Feed point is located at NW corner of 1st St. and Sierra Way.

Existing lead covered street lighting cables shall be removed from system and replaced with new shielded lighting cables installed in accordance with specifications. Mercury vapor lamp ballast transformers shall be installed on base of standard except where notes otherwise.



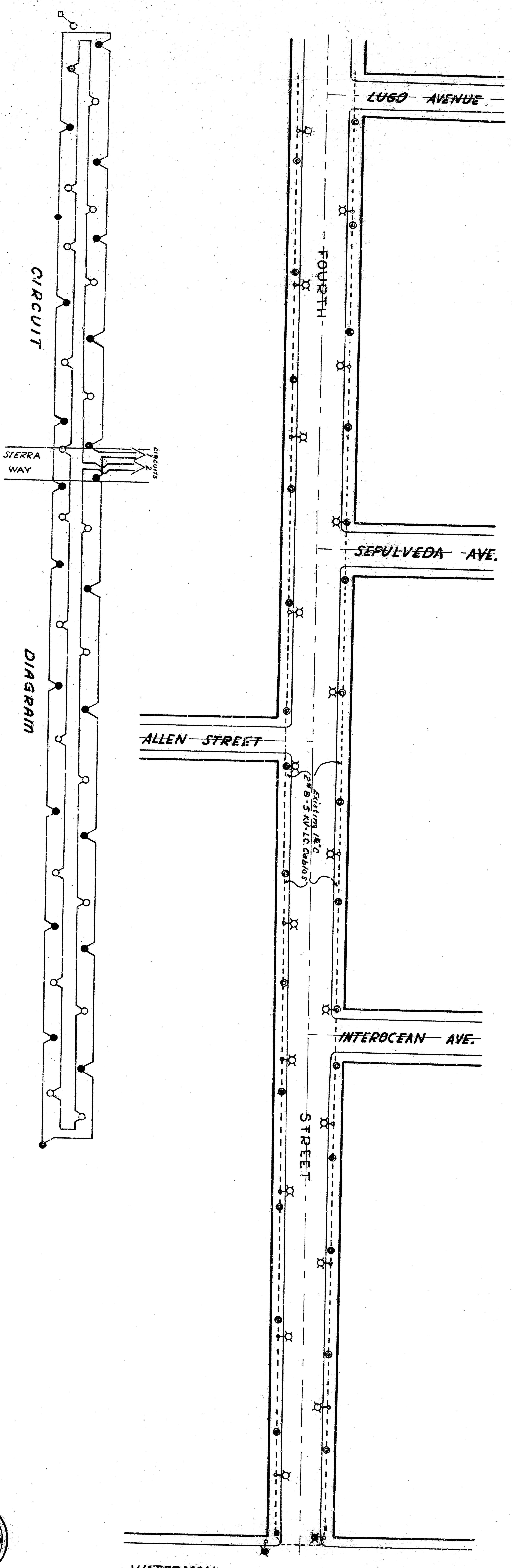
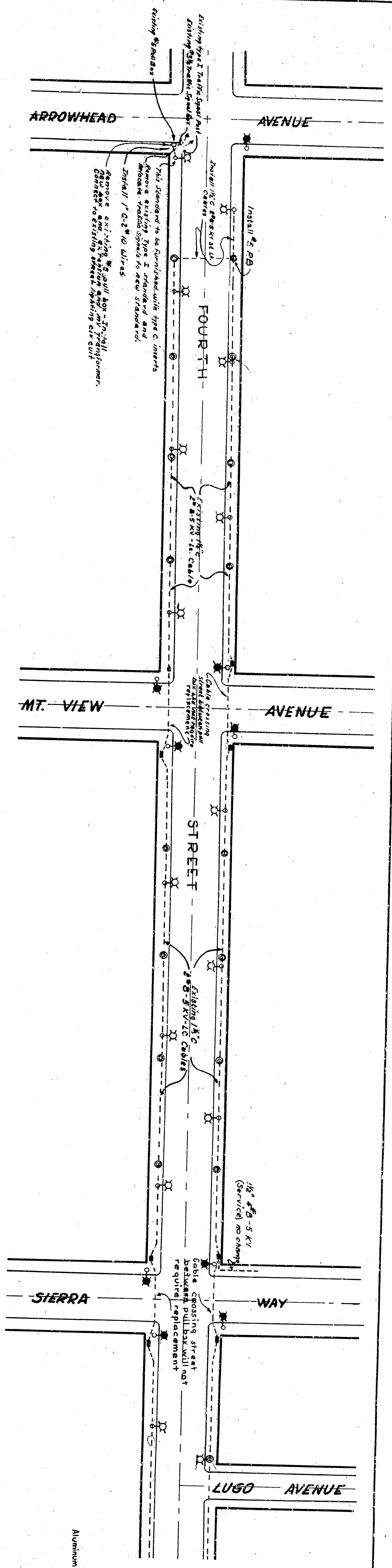
PLAN OF BASE
Not To Scale



APPROVED	DATE	1922
REGISTERED CIVIL ENGINEER	NO. 12345	
DRAWN BY	NO. 12345	
CHECKED BY	DATE	
SHEET	1 OF	1 SHEETS

DEPARTMENT OF ENGINEERING
CITY OF SAN BERNARDINO
ORNAMENTAL LIGHTING
FOURTH STREET
ARROWHEAD AVE. TO WATERMAN AVE.

Not Constructed
Plotted on 7

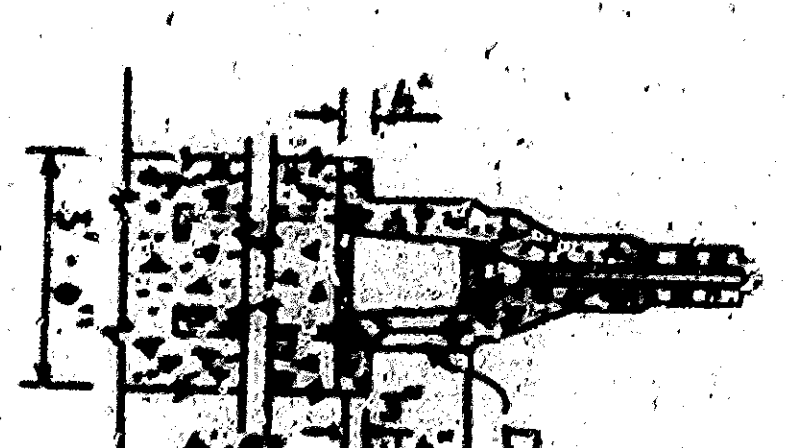
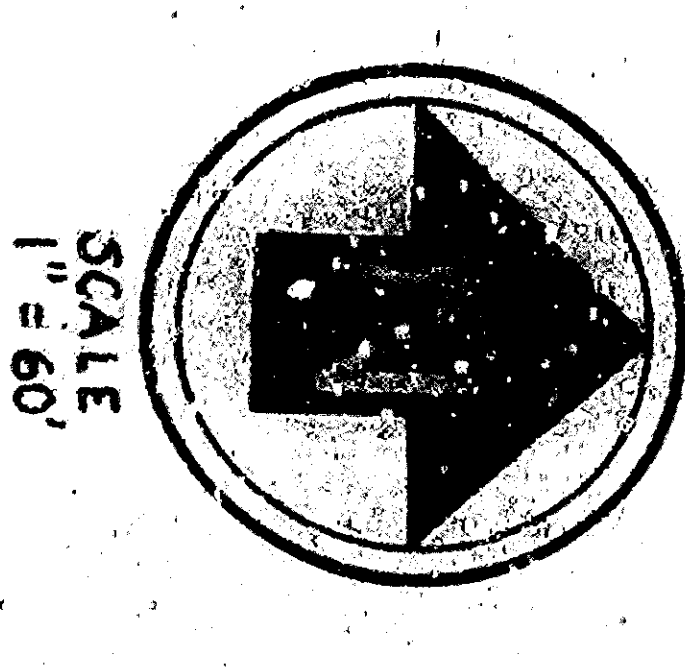
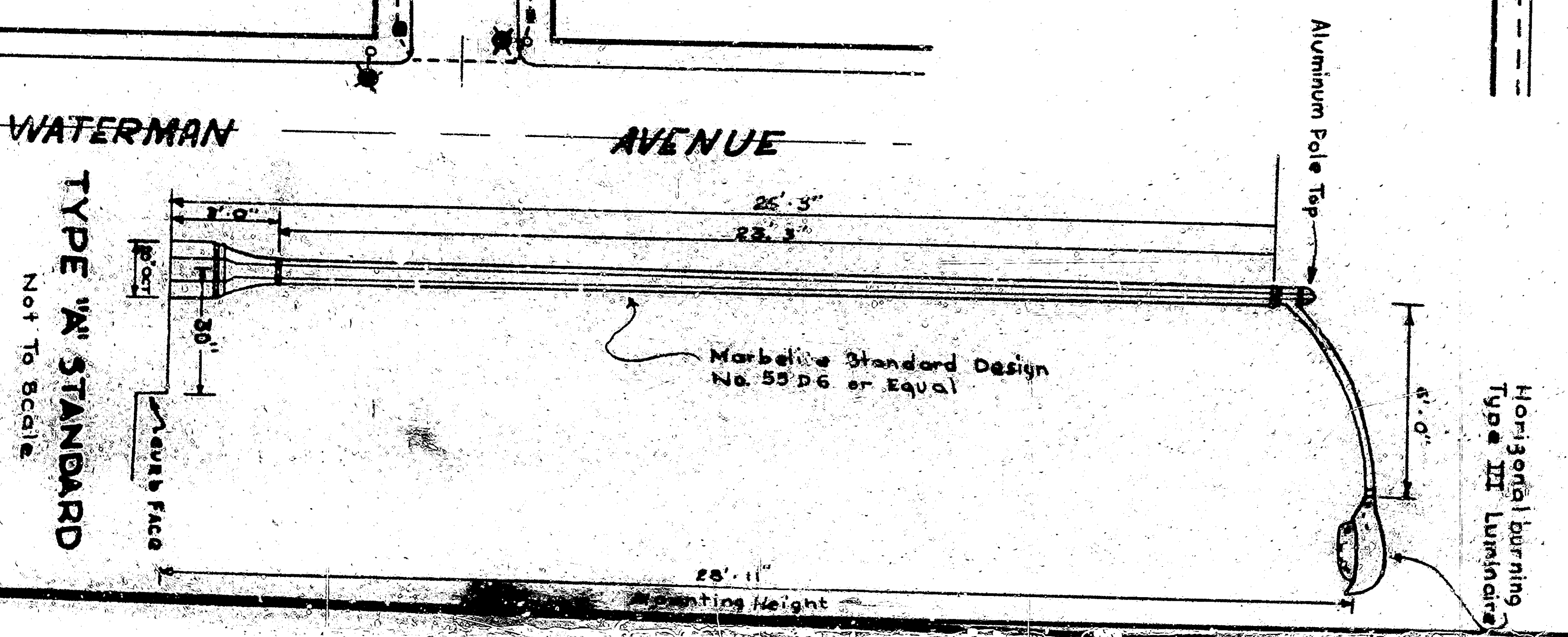


- LEGEND:**
- Existing Street Light Standard to remain in Present Location.
 - Existing Street Light Standard to be removed. Reconnect to new Street Light Cable.
 - Existing Street Light Standard to be removed. Reconnect to new Street Light Cable. Foundation and Conduit Etc. to be removed. New Foundation to be installed.
 - Existing Street Light Standard to be removed. Reconnect to new Street Light Cable. Foundation and Conduit Etc. to be removed. New Foundation to be installed. Approximate Location of New Foundation.
 - Existing Street Light Standard to be removed. Reconnect to new Street Light Cable. Foundation and Conduit Etc. to be removed. New Foundation to be installed. Approximate Location of New Foundation.
 - Existing Street Light Standard to be removed. Reconnect to new Street Light Cable. Foundation and Conduit Etc. to be removed. New Foundation to be installed. Approximate Location of New Foundation.
 - Existing Street Light Standard to be removed. Reconnect to new Street Light Cable. Foundation and Conduit Etc. to be removed. New Foundation to be installed. Approximate Location of New Foundation.

NOTES:

Existing 6-6 copper service street lighting circuits consist of 16 conductors and 270-330 KV cables. Feed point is located at NW corner of 1st St. and Sierra Way.

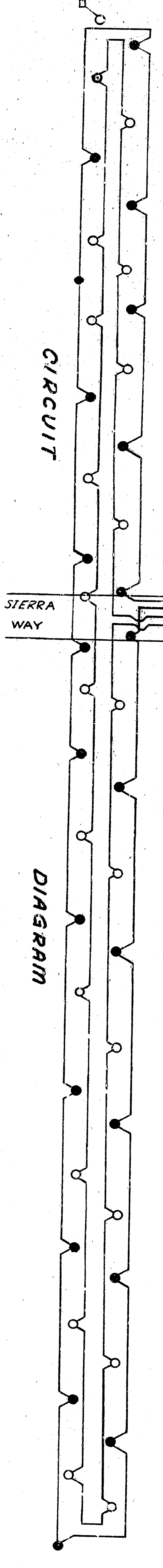
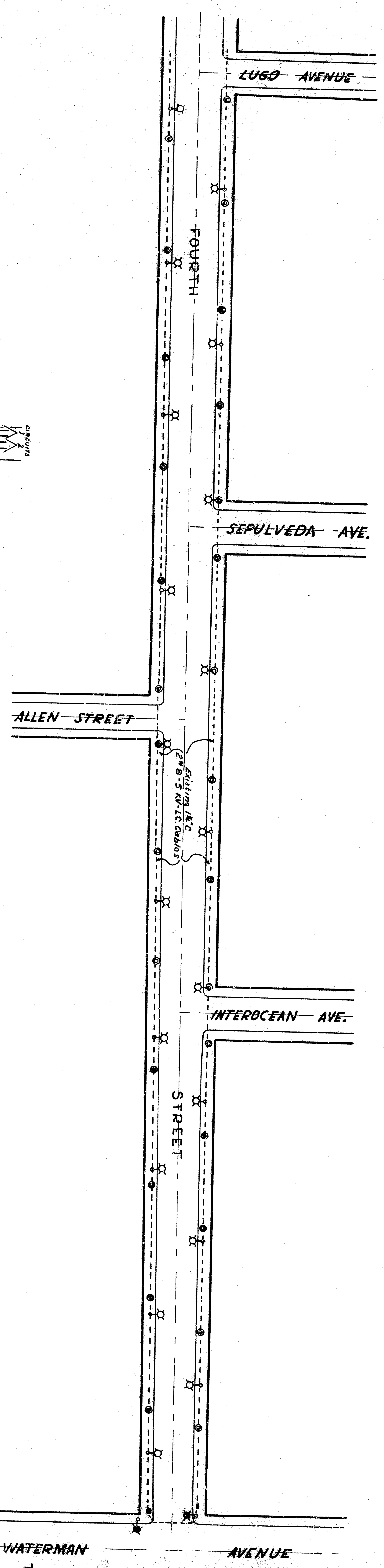
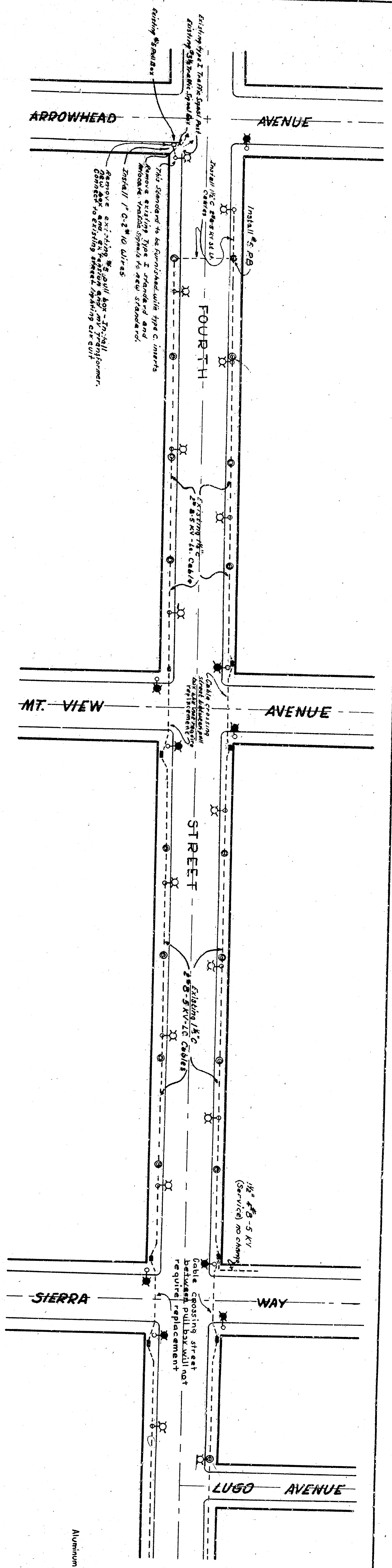
Existing lead covered street lighting cables shall be removed from system and replaced with new aluminum cables installed in accordance with specifications. Mercury vapor lamp ballast transformers shall be installed on base of standard except where noted otherwise on plan.



PLAN OF BASE
Not To Scale

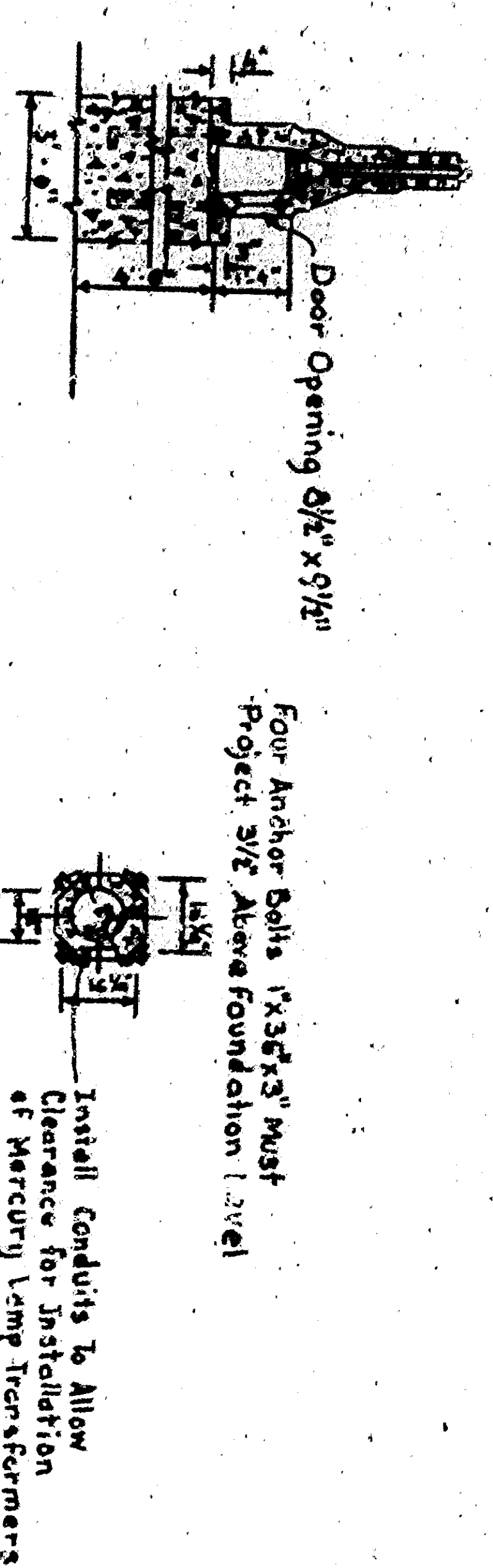
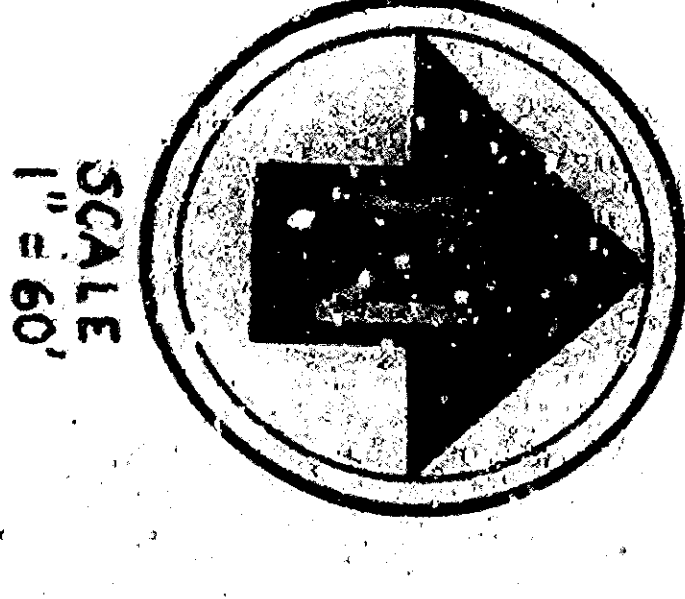
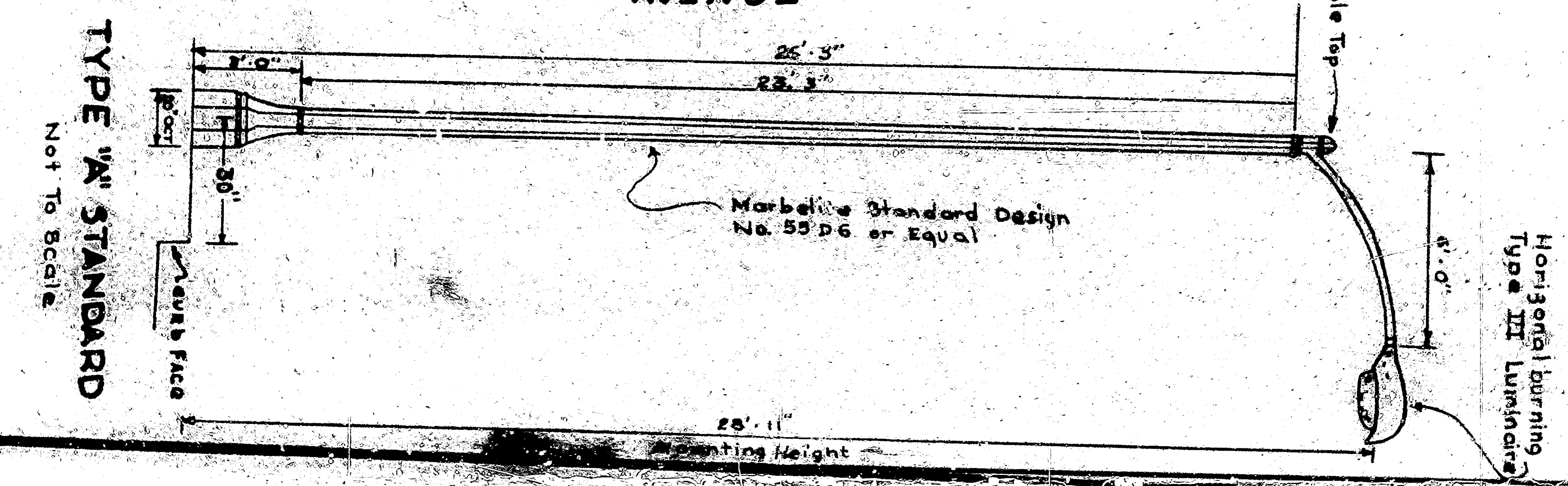
APPROVED	DATE	1922
CITY ENGINEER	REGISTERED CIVIL ENGINEER	NO. 12345
DRAWN BY	CHECKED BY	DATE
SHEET 1 OF 1 SHEETS		
DEPARTMENT OF ENGINEERING CITY OF SAN BERNARDINO ORNAMENTAL LIGHTING FOURTH STREET ARROWHEAD AVE. TO WATERMAN AVE.		

Not Constructed
Plotted by C. F.



- LEGEND:**
- Existing Street Light Standard to remain in Present Location.
 - Existing Street Light Standard to be removed to new Street Light Cable.
 - Existing Street Light Standard to be removed to new Street Light Cable, and conductors to be removed to new Street Light Cable.
 - Existing Street Light Standard to be removed to new Street Light Cable, and conductors to be removed to new Street Light Cable, and conductors to be removed to new Street Light Cable.
 - Existing Street Light Standard to be removed to new Street Light Cable, and conductors to be removed to new Street Light Cable, and conductors to be removed to new Street Light Cable.
 - Existing Street Light Standard to be removed to new Street Light Cable, and conductors to be removed to new Street Light Cable, and conductors to be removed to new Street Light Cable.
 - Existing Street Light Standard to be removed to new Street Light Cable, and conductors to be removed to new Street Light Cable, and conductors to be removed to new Street Light Cable.
 - Existing Street Light Standard to be removed to new Street Light Cable, and conductors to be removed to new Street Light Cable, and conductors to be removed to new Street Light Cable.

- NOTES:**
- Existing 66 copper, 4-wire, shielded lighting circuits consist of 16 conductors and 270-330 KV cables. Feed point is located at NW corner of 1st St. and Sierra Way.
 - Existing lead covered street lighting cables shall be removed from existing poles and new street lighting cables installed in accordance with specifications.
 - Mercury vapor lamp ballast transformers shall be installed on base of standard street light poles wherever indicated on plan.



PLAN OF BASE
Not to Scale

APPROVED	DATE	1922	DEPARTMENT OF ENGINEERING
DRAWN BY	NO.	100	CITY OF SAN BERNARDINO
CHECKED BY	NO.	100	ORNAMENTAL LIGHTING
SHEET 1 OF 1			FOURTH STREET
ARROWHEAD AVE. TO WATERMAN AVE.			

Not Constructed
Notes to Ca 7